



NPC CONFIDENTIAL HELPLINE


NPC's Helpline offers confidential support to all parents of students in post-primary school.



The Helpline extends its support to Parents' Associations and assists schools in establishing such associations.



It aids the school community in supporting parental engagement in their children's learning.



The Helpline offers accurate and current information on educational issues.

The Helpline can be contacted
Monday to Friday 10am - 4pm

Tel: 01 8874477
email: helpline@npc.ie
Webchat: www.npc.ie

PARTNERSHIP SCHOOLS IRELAND

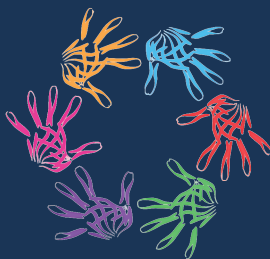
Partnership Schools Ireland (PSI) aims to ensure better outcomes for students by promoting partnerships between their schools, families and wider communities.

PSI is an evidence based programme that increases student success by mobilising the support of their families and communities.



WANT TO KNOW MORE?

Tel: 01-887 4034
email: psi@npc.ie
www.npc.ie



**Partnership
SCHOOLS
IRELAND**



National Parents Council

NPC is the only recognised representative organisation for parents of children in early years, primary and post primary education

KEY ACTIVITIES

TRAINING SESSIONS FOR PARENTS

HOW DO I BOOK A TRAINING SESSION?

Service Delivery

NPC's Helpline and Training services are developed to empower parents so that they can support their children in all aspects of education.



Advocacy

NPC engages in awareness-raising activities and campaigning and lobbying at a national level on the Mission, Vision, and Values of the organisation.



Representing Parents

NPC represents the voice of parents through representation on external bodies and other mediums. NPC consults with parents and brings parents' views to bear on education policy.



Building Participation

NPC builds participation strategies and activities to ensure parents and children are an integral part of the work of NPC.



Training sessions for parents can be delivered 'in-person' in your school or online.

All sessions are delivered by our nationwide panel of expert trainers.



ANTI-BULLYING: How to support your child if they are involved in a bullying incident, and how to work in partnership with your child and school to find workable solutions in line with Cineáltas guidelines.



PARENTS' ASSOCIATION 1: How to get all parents in your school engaged in their child's education.



PARENTS' ASSOCIATION 2: Committee skills for those parents doing the work on behalf of the Parents' Association.



TRANSITION FROM PRIMARY TO POST-PRIMARY: Tips and advice on how to support your child's transition to post-primary.



SUPPORTING YOUR CHILD TO BUILD HEALTHY FRIENDSHIPS & RELATIONSHIPS



For training enquiries:
Tel: 01-887 4475
training@npc.ie

or visit our website
www.npc.ie to book online

Would your Parents' Association like to become a member of NPC?

Find out more at
www.npc.ie



NPC

SUPPORTING PARENTS
SUPPORTING CHILDREN